

LOWER FLOOR PLAN

1/8" = 1' — 0"

PRELIMINARY ONLY NOT FOR CONSTRUCTION

DRAWN BY: *[Signature]*
 CHECKED BY: *[Signature]*
 DATE: 11/05/07
 JOB NO.: 070278
 REVISION DATE:

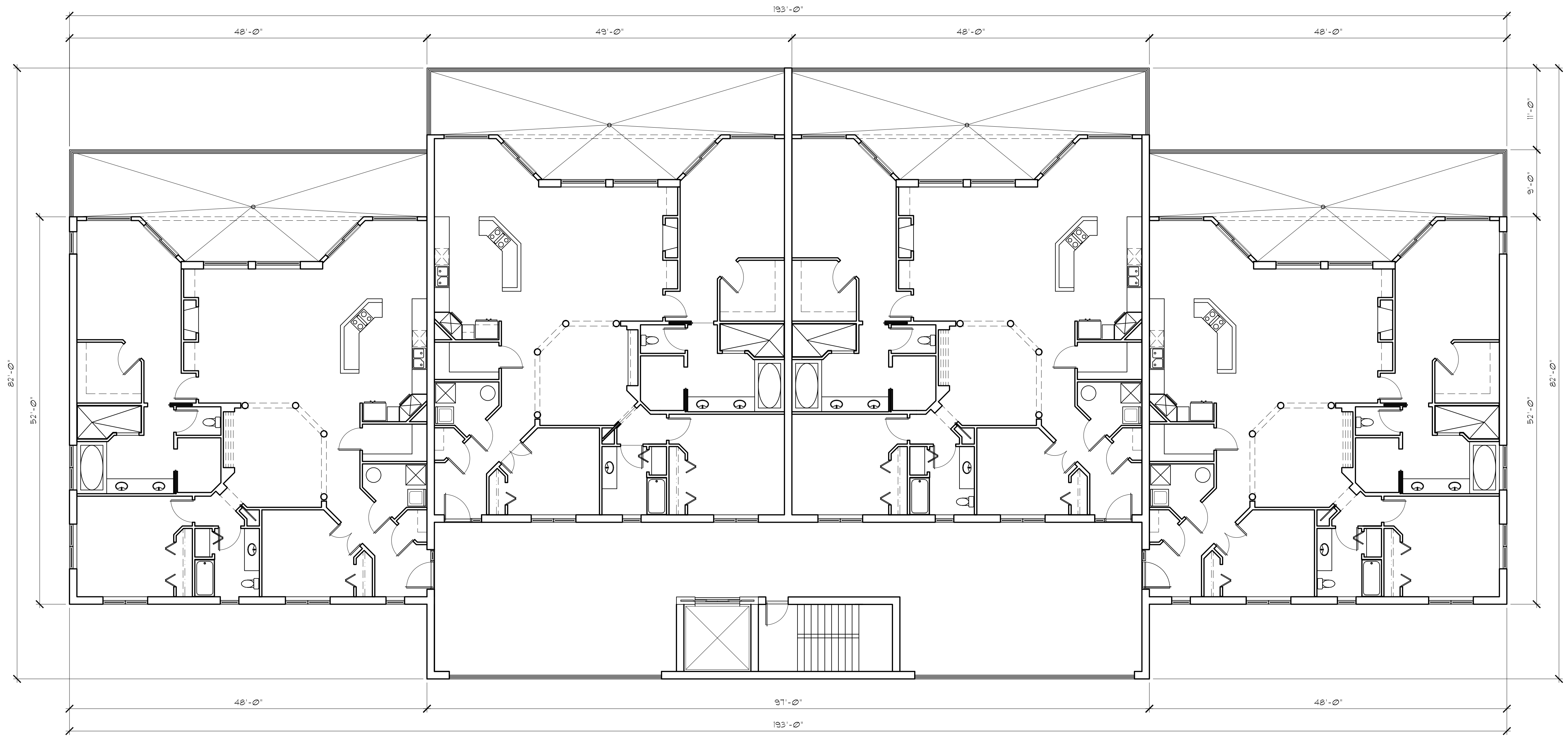
SHEET:
A3

Bott & Associates
 ARCHITECTS

LEWISTON COTTONWOOD
 0309 2nd Street Lewiston, Idaho 83501 402-B King Street Cottonwood, Idaho 83522
 Ph: (208) 746-9871 Fax: (208) 746-3523 Ph: (208) 962-5458 Fax: (208) 962-7178

WATER'S EDGE CONDO'S 3

13th Street
 Asotin, Washington
LOWER FLOOR PLAN



MAIN FLOOR PLAN (UPPER SIMILAR)

1/8" = 1' - 0"

PRELIMINARY ONLY NOT FOR CONSTRUCTION

DRAWN BY:

CHECKED BY:

DATE: 11/05/07

JOB NO.: 070218

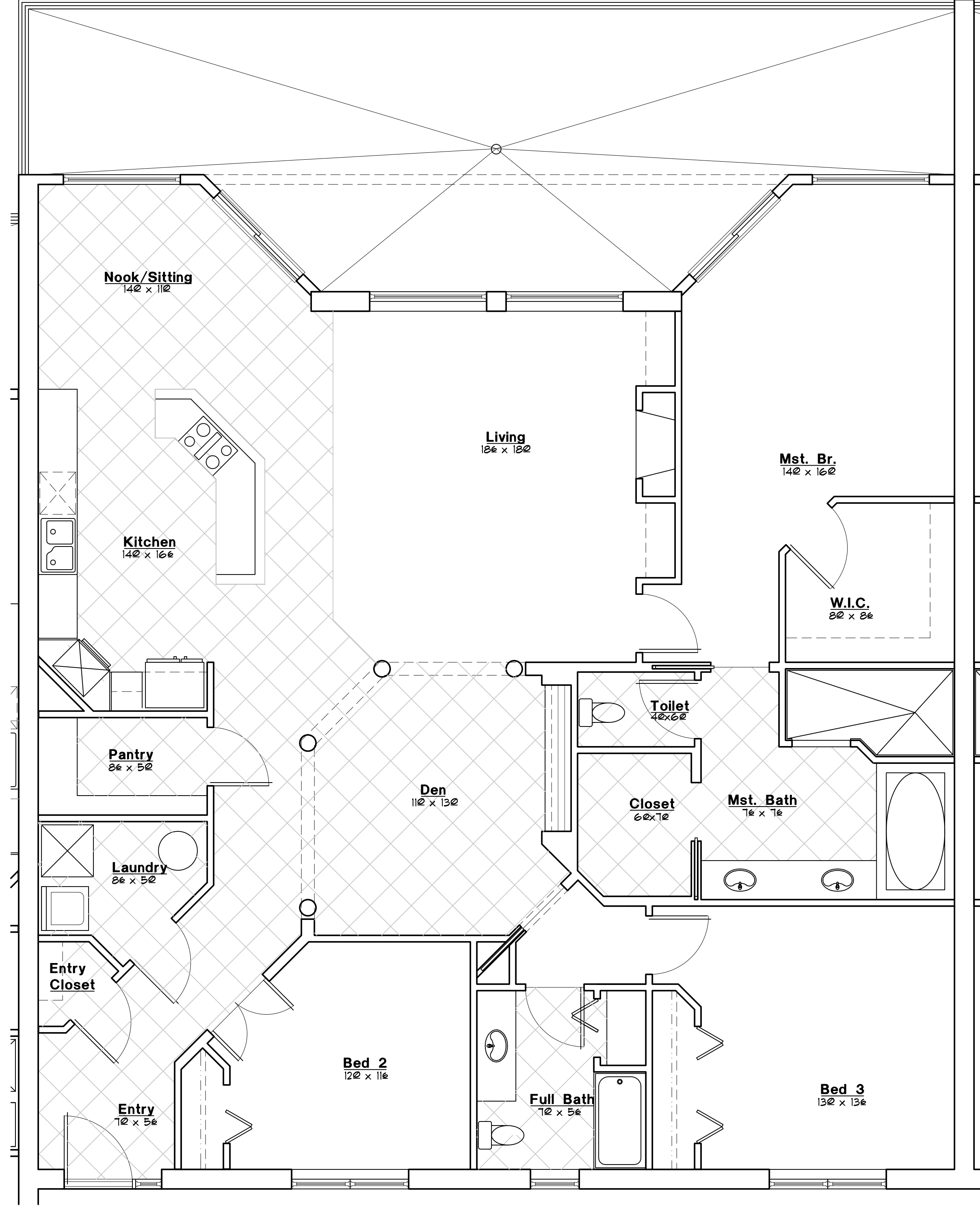
REVISION DATE:

SHEET:
A4

Bott & Associates

A R C H I T E C T S
L E W I S T O N C O T T O N W O O D
0309 2nd Street Lewiston, Idaho 83501 402-B King Street Cottonwood, Idaho 83522
Ph: (208) 746-9871 Fax: (208) 746-3523 Ph: (208) 962-5458 Fax: (208) 962-7178

WATER'S EDGE CONDO'S 3
13th Street
Asotin, Washington
MAIN FLOOR PLAN (UPPER SIMILAR)



TYPICAL UNIT PLAN

1/4" = 1' - 0"

PRELIMINARY ONLY NOT FOR CONSTRUCTION

DRAWN BY: *[Signature]*
 CHECKED BY: *[Signature]*
 DATE: 11/05/07
 JOB NO.: 070278
 REVISION DATE:

SHEET:
A4.2

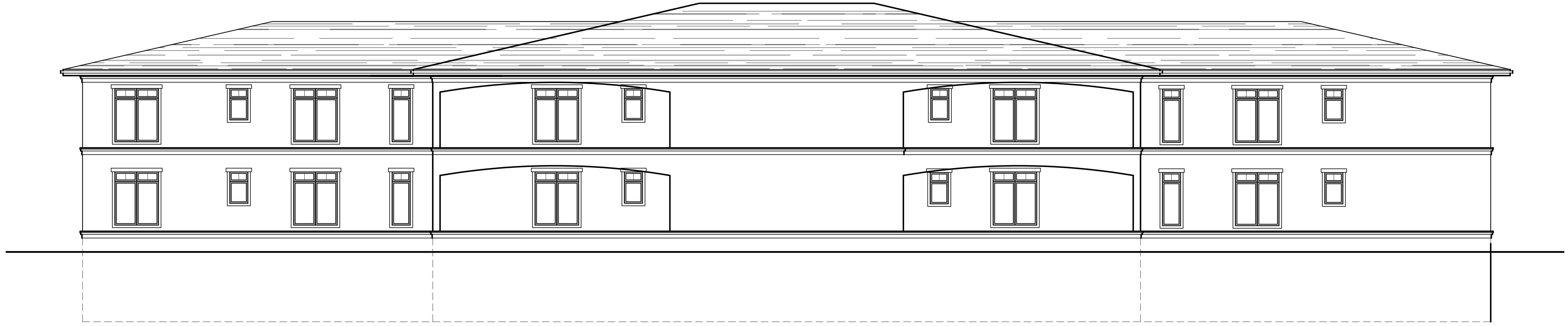
Bott & Associates
 A R C H I T E C T S

LEWISTON COTTONWOOD
 0309 2nd Street Lewiston, Idaho 83501 402-B King Street Cottonwood, Idaho 83522
 Ph: (208) 746-9871 Fax: (208) 746-3523 Ph: (208) 962-5458 Fax: (208) 962-7178

WATER'S EDGE CONDO'S 3

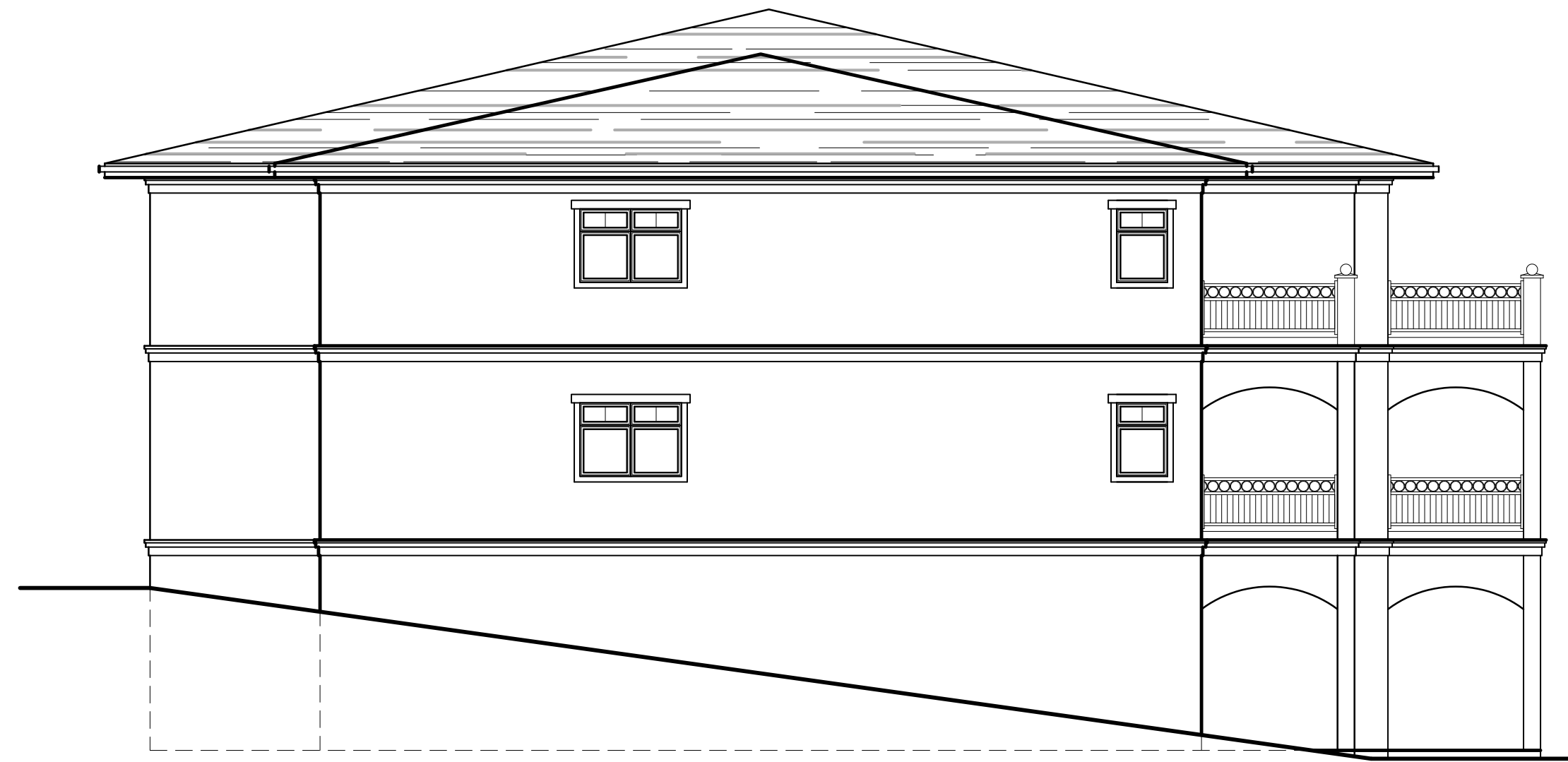
13th Street
 Asotin, Washington

TYPICAL UNIT PLAN



WEST (ENTRY) ELEVATION

1/8" = 1' — 0"



SOUTH (NORTH MIRROR) ELEVATION

1/4" = 1' — 0"

WATER'S EDGE CONDO'S 3

**13th Street
Asotin, Washington**

WEST (ENTRY) / NORTH / SOUTH ELEVATION

Bott & Associates
A R C H I T E C T S

LEWISTON COTTONWOOD
0309 2nd Street Lewiston, Idaho 83501 402-B King Street Cottonwood, Idaho 83522
Ph: (208) 746-9871 Fax: (208) 746-3523 Ph: (208) 962-5458 Fax: (208) 962-7178

PRELIMINARY ONLY NOT FOR CONSTRUCTION

DRAWN BY: RJA/16
CHECKED BY: RJA
DATE: 11/05/07
JOB NO.: 070218
REVISION DATE:

SHEET:
A6



EAST (RIVER) ELEVATION

1/8" = 1' — 0"



ENLARGED RIGHT EAST (RIVER) ELEVATION

1/4" = 1' — 0"



ENLARGED LEFT EAST (RIVER) ELEVATION

1/4" = 1' — 0"

WATER'S EDGE CONDO'S 3

**13th Street
Asotin, Washington**

EAST (RIVER) ELEVATION

Bott & Associates
A R C H I T E C T S

LEWISTON COTTONWOOD
0309 2nd Street Lewiston, Idaho 83501 402-B King Street Cottonwood, Idaho 83522
Ph: (208) 746-9871 Fax: (208) 746-3523 Ph: (208) 962-5458 Fax: (208) 962-7178

**PRELIMINARY ONLY NOT
FOR CONSTRUCTION**

DRAWN BY: RWT
CHECKED BY: [Signature]
DATE: 11/05/07
JOB NO.: 070218
REVISION DATE:

SHEET:

A7